



Right Angle Tactile Switches Series SPJ



PAT. I341543
PAT. ZL 2007 2 0306718.9

General Specifications

Switch circuit
Switch contact rating
LED rating

Dielectric Withstanding Voltage
Contact Resistance
Insulation Resistance
Operating Force
Total Travel
Mechanical Life
Operating Temperature

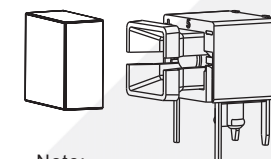
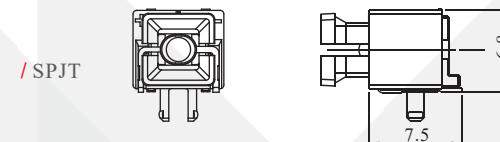
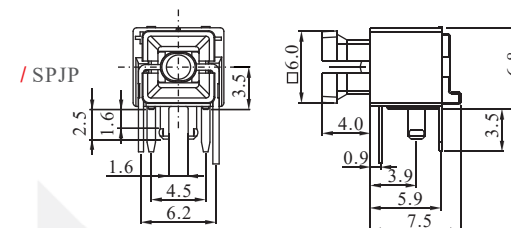
Materials

Cap
Base
Reflector
Switch Terminal
Action Dome
Sealing rubber

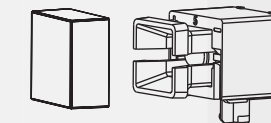
:SPST
:50mA @ 12V DC max
:Limited forward current(IF)
at 20mA max
:250VAC for 1 minute
:100m Ohm Max.(initial)
:100M Ohm Min.
:200gf±50gf
:0.3mm±0.1mm
:1,000,000 cycles Min.
:-10 °C ~ +60 °C

:Polycarbonate (PC)
:Polyamide (PA)
:Polyamide (PA)
:Brass with gold plating
:Stainless steel with silver plating
:Silicone

Dimension

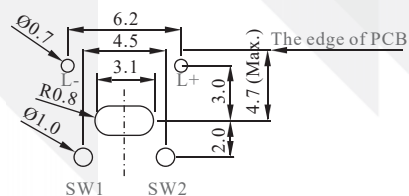
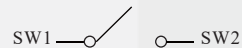


Note:
*Fit cap **AFTER** soldering process.

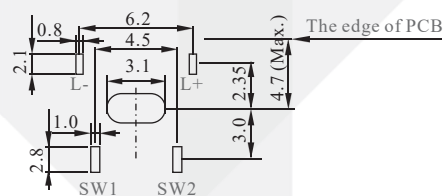


Note:
*Fit cap **AFTER** soldering process.

PCB layout & Circuit Diagram



/ Through hole type - SPJP



/ SMD type - SPJT

How to Order

SPJ

Terminal	
P	Through hole
T	SMD Taping reel (400PCS/reel)

LED Color	
1	Red
2	Yellow
3	Green
4	White
7	Blue



EXAMPLE:
SPJPIYCA044TD
From Page 33

Page 34

6
Page 36

9 6
Page 52

12 6
Page 52

9
Page 42

12
Page 49